



www.sterlinghomes.co.uk

01923 270 666  
Kings Langley, Abbots  
Langley & Watford;

01442 822 210  
Property  
Management

01442 879 996  
Berkhamsted Select  
& Country Homes;

01442 828 222  
Tring, Wendover,  
Aylesbury & Villages;

Is there a price that would tempt you to sell or let your property? Contact us for a free valuation and let's see if we can tempt you!

# Temptation comes in many forms...



PROPOSED SITE PLAN

| Schedule of Accommodation |       |       |        |
|---------------------------|-------|-------|--------|
|                           | 4 bed | 3 bed | Totals |
| Totals                    | 3     | 2     | 5      |
| Parking spaces            | 9     | 8     | 17     |



**Berkhamsted**

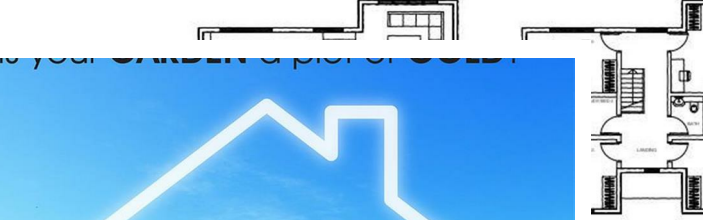
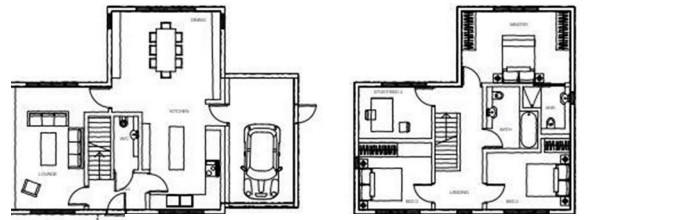
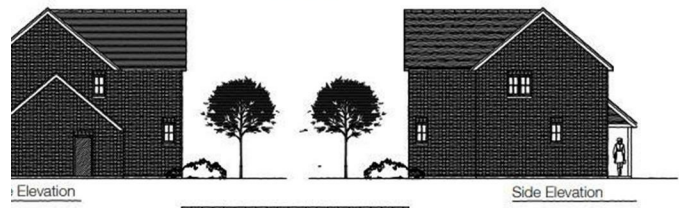
OFFERS IN THE REGION OF £2,500,000

# Berkhamsted

OFFERS IN THE REGION OF

£2,500,000

A rare chance to purchase a site which has consent for the construction of 5 executive detached dwellings in a prime residential location in the popular Berkhamsted village of Potten End. Contact Sterling for more information on the new build units.



to your children's preferences

After achieving several successful planning applications recently, Sterling Land Department urgently require more land for development clients.

Please contact Ben Bird, company owner via email at benbird@sterlinghomes.co.uk or call him on 01442 828 222.

We are happy to advise on any land sites or large gardens in the district of confidence and without charge.

You may be genuinely surprised at the prices we can achieve for your land.

[www.sterlinghomes.co.uk](http://www.sterlinghomes.co.uk)



| Energy Efficiency Rating                    |                         | Environmental Impact (CO <sub>2</sub> ) Rating                  |                         |
|---|-------------------------|---|-------------------------|
| Current                                     | Potential               | Current   | Potential               |
| (92 plus) A                                 |                         | (92 plus) A   |                         |
| (81-91) B                                   |                         | (81-91) B   |                         |
| (69-80) C                                   |                         | (69-80) C   |                         |
| (55-68) D                                   |                         | (55-68) D   |                         |
| (39-54) E                                   |                         | (39-54) E   |                         |
| (21-38) F                                   |                         | (21-38) F   |                         |
| (1-20) G                                    |                         | (1-20) G  |                         |
| Not energy efficient - higher running costs |                         | Not environmentally friendly - higher CO <sub>2</sub> emissions |                         |
| England & Wales                             | EU Directive 2002/91/EC | England & Wales   | EU Directive 2002/91/EC |

[www.sterlinghomes.co.uk](http://www.sterlinghomes.co.uk)



[www.sterlinghomes.co.uk](http://www.sterlinghomes.co.uk)



[www.sterlinghomes.co.uk](http://www.sterlinghomes.co.uk)



[www.sterlinghomes.co.uk](http://www.sterlinghomes.co.uk)

